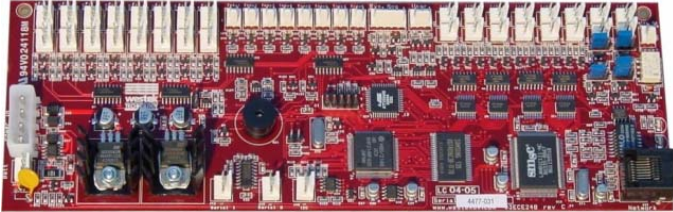


Guardian M2 Alarm Module



Westeks **Guardian M2 Alarm Module** may be fitted as an option to most rack enclosures to provide complete system and environmental monitoring, and provide both local and remote alerting via serial port, USB or using SNMP traps over Ethernet.

The Alarm module is free standing and does not take up valuable system expansion slots.

Hardware Specification

- ▶ **Compact Size:** 80mm x 233mm.
- ▶ **Dual Serial ports.** Card can be monitored by 2 host systems simultaneously. Card can also be connected to a USB port using a readily available and cheap USB-Serial adaptor cable.
- ▶ **10/100Mb Ethernet Port** (RJ45) for Remote access, monitoring and error reporting. On board web status page and SNMP Trap support.
- ▶ **On Board Processor** for monitoring system without dependence on host system software or bus type. Firmware code flash upgradeable through serial ports for future enhancements.
- ▶ **16 x Tachometer Fan** connectors to measure fan speeds up to 10000rpm. Processor or Chassis cooling fans.
- ▶ **8 x Temperature Inputs** for measuring chassis temperatures from -23 to 100°C.
- ▶ **16 x User Definable Inputs or Outputs.** Can be configured as Outputs for Status LED's or 5V fail signals or as Inputs for Chassis intrusion switches, PSU status, other fail signals etc. 4 of these I/O's can also be configured (with Jumpers) to act as Relay drivers.
- ▶ **Dedicated Watchdog Reset Connector.** Can be used to reset system in the event of system lockup.
- ▶ **System Voltages** connector for measuring +12v,-12v,+5v,+3.3v
- ▶ **Simple Power Connection.** Molex style power connector to monitor system voltages and power the alarm card. The Alarm Card uses +12V at 340mA maximum
- ▶ **User Defined Voltage Sensor** connector for measuring 2 x user defined voltage inputs up to +/-60v.
- ▶ **On Board Speaker** for generating alert condition.
- ▶ **Backup Battery** connector for add on battery to provide power to the alarm card (except fans) in the event of power failure.
- ▶ **On Board Event Logging**

Software

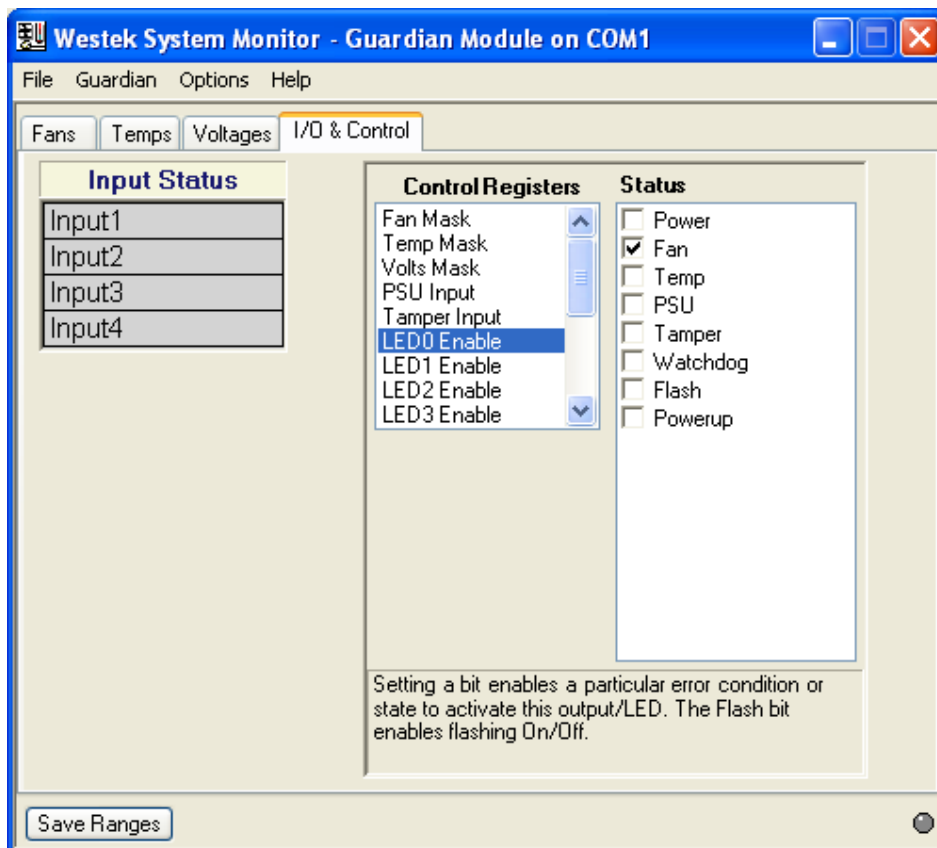
Command line utilities are provided to configure the card under Windows & Linux. A Developers Kit is also available with interface component and examples of application programming over the serial port.

An integrated web based browser status page is also available via the Ethernet connection to the card. A Windows GUI System Monitor Utility is available to provide a simple interface to the alarm card as an option for windows based applications.

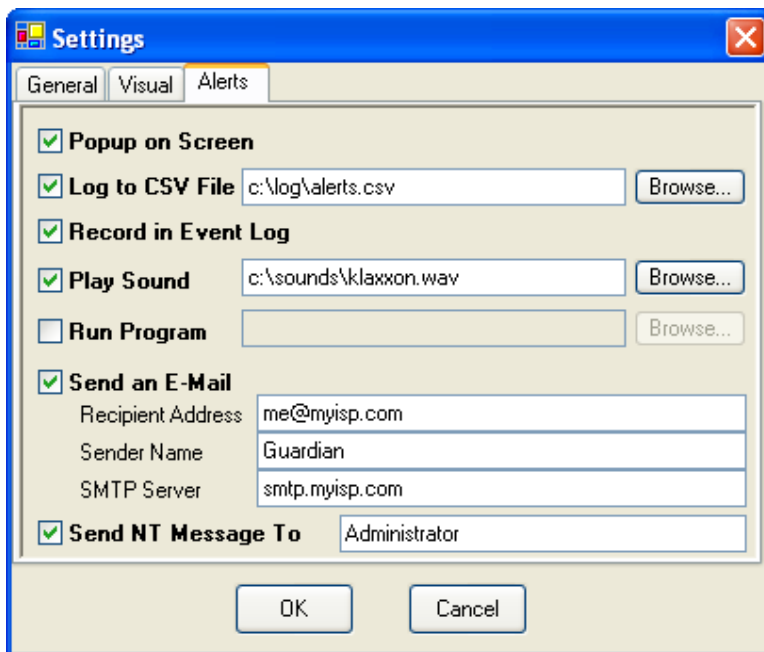
Windows GUI System Monitor Utility

The System Monitor is a Microsoft Windows based GUI (Graphical User Interface) program that allows a system administrator to configure and view the status of Guardian Alarm cards attached to the host computer.

The software can be configured to provide alerts other than those built into the alarm card, such as e-mail alerts or network messages. Part of the software includes a background monitoring service that can continue to monitor the status of the card and provide alerts even when the user/administrator has logged out of the OS and the system is at the login screen, as is usually the case with server operating systems.

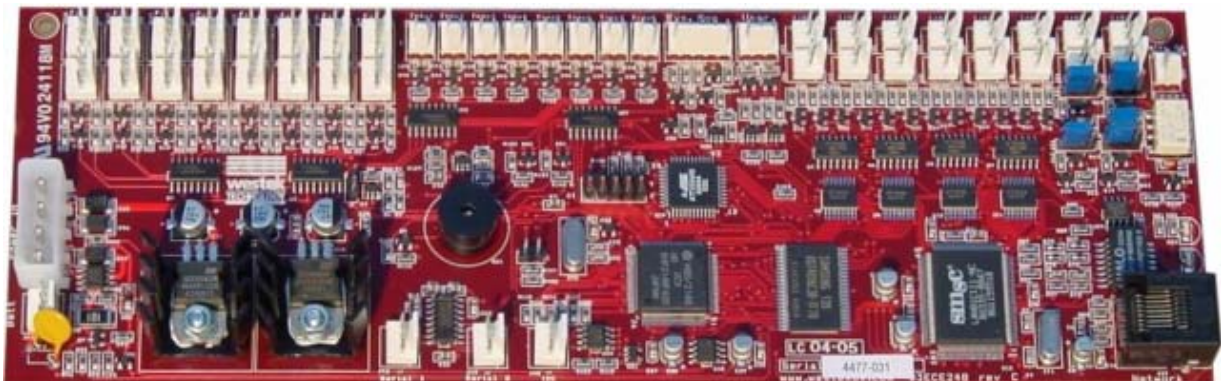


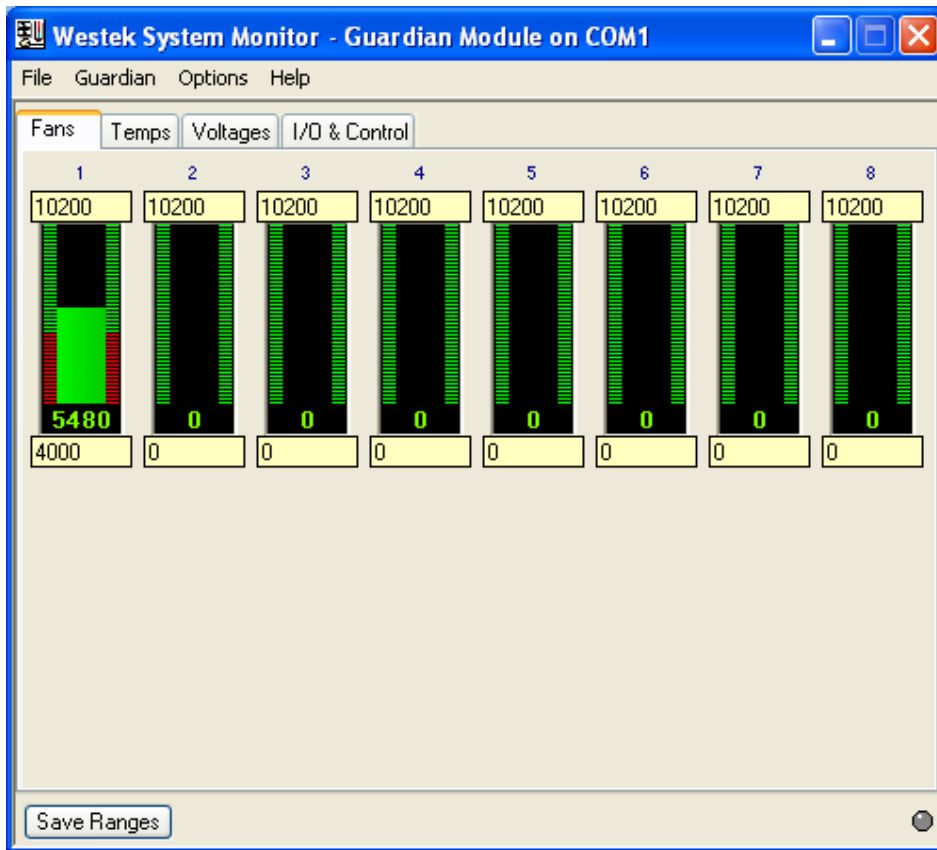
The System monitoring software has been developed using the latest Microsoft .NET technologies to provide the most benefits of using an application under Windows 2000/2003/XP and future Windows operating systems.



Features

- Graphical display of status of attached devices.
- Connects to alarm cards via Serial port or Ethernet TCP/IP
- Multiple alerting channels: SMTP e-mail, Network message, Event Log, Play sound, Log to file, Run Program.
- Windows NT Service for background monitoring.
- Load and Save configuration of card to file.
- On line help documentation.





System Requirements (Windows System Monitor Utility Only)

Microsoft Windows NT4, Windows 2000, Windows XP, Windows 2003.
Microsoft .NET Framework 1.1 or above.
128MB RAM.

Westek Technology Limited

Unit 1 Lancaster Park Industrial Estate
Bowerhill
Melksham
Wiltshire SN12 6TT
UK



Telephone +44 (0)1225 790600
email : Sales@westekuk.com

Specifications subject to change without notice